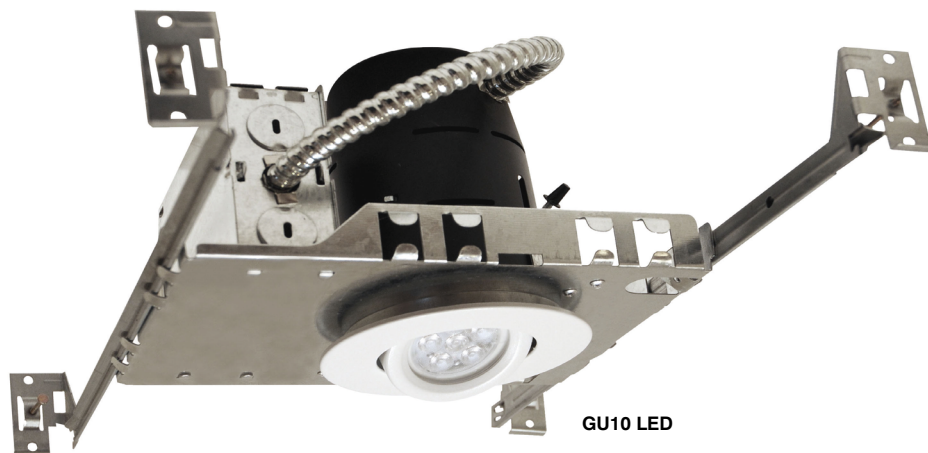


# MINILUX

3-1/2" Series

Project	
Notes	
Fixture Type	
Date	

## Complete Unit: Non-IC New Construction Housing, Trim and LED lamp



### DESCRIPTION

Non-IC New Construction housing can be installed in damp or wet (shower trim only) locations, indoor and outdoor.

### HOUSING SPECIFICATIONS

**HOUSING DETAILS**      **MAX 50W**  
 0,030" (0,76 mm) thickness galvanized steel  
 Below-ceiling accessible

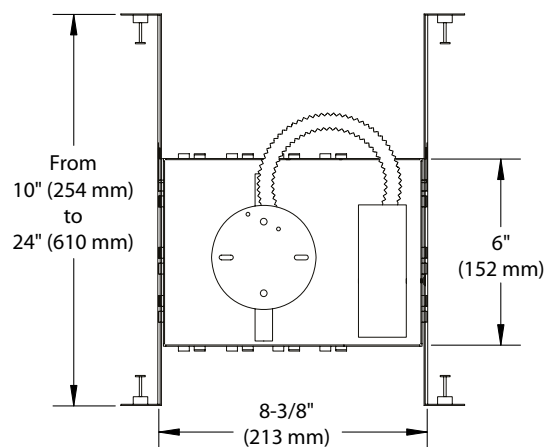
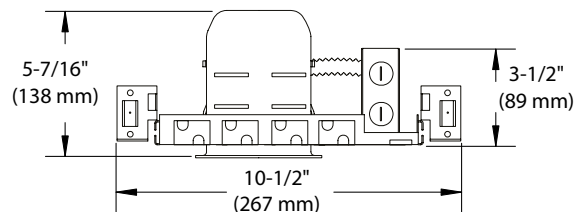
**MOUNTING**      Perfect fit into ceiling  
 No light leakage

**CEILING FINISH**      **Cutout**      **Thickness**  
 Ø 3-5/8" (92 mm)      Installs to ceilings up to  
 1-3/8" (35 mm) thick.

**THERMAL PROTECTOR**      TC 221°F (105°C)

**VOLTAGE**      120 Volts

**CERTIFICATIONS**      • cULus Listed **E252582** for damp and wet (shower trim only) locations  
 • Energy Star® certified lamp included

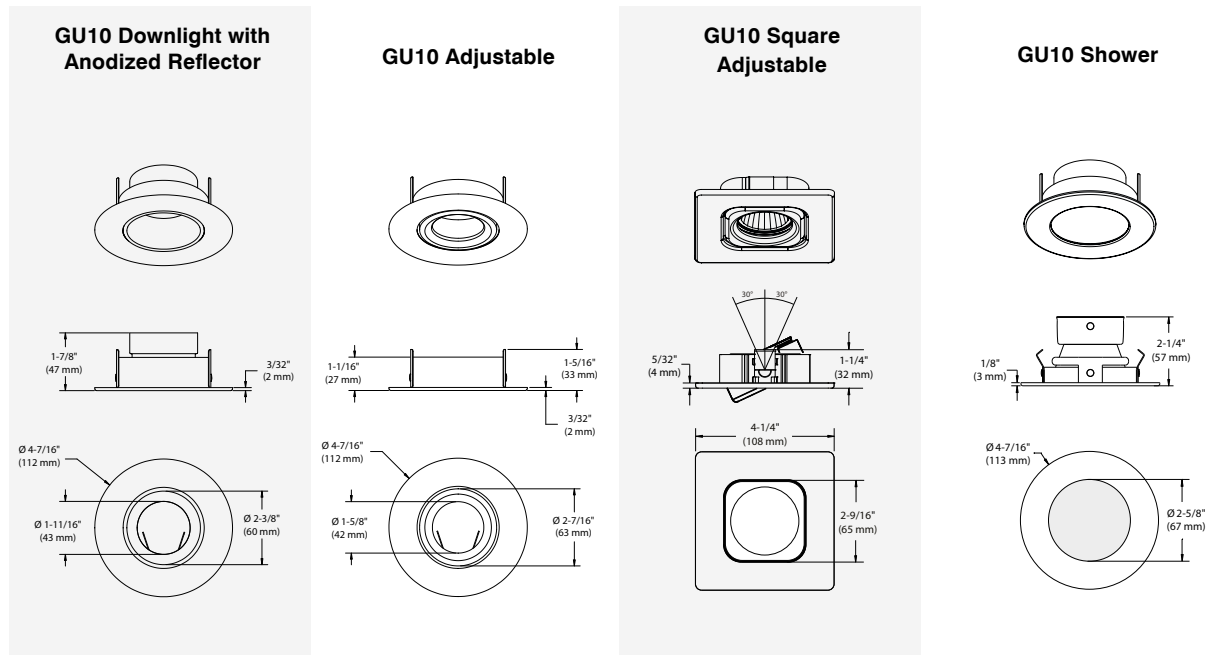


# MINILUX

## 3-1/2" Series

### TRIM SPECIFICATIONS

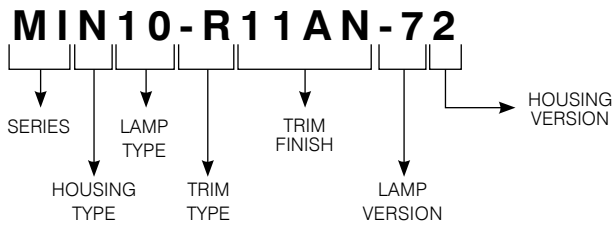
LIGHT SOURCE	<p><b>GU10 LED High Brightness</b>                  Color: Warm White (3,000K)                  500 Lumen output                  CRI: 90 +                  Beam Angle: 40°                  Lifespan: 50,000 hours                  Power Consumption: 7.5W                  Compatible with most incandescent, Magnetic Low Voltage (MLV) and Electronic Low Voltage (ELV) dimmers.</p> <p><b>Due to constant evolution of LED lamps and associated dimmers we must test them regularly.</b>  <b>We invite you to consult frequently our Web site to find our dimmer compatibility list: <a href="http://www.contrastlighting.com">www.contrastlighting.com</a></b></p>
TRIM TYPES	<p>Round Adjustable Trim up to 20° in White (-G01), Matte White (-G11), Satin Nickel (-G13) and Matte Black (-G22)</p> <p>Square Adjustable Trim up to 20° in White (-Q01), Matte White (-Q11) or Satin Nickel (-Q13)</p> <p>Downlight Trim with anodized reflector in White (-R01AN), Matte White (-R11AN) and Satin Nickel (-R13AN)</p> <p>Shower Trim in White (-S01), Matte White (-S11) and Satin Nickel (-S13)</p>
WARRANTY	<ul style="list-style-type: none"> <li>• Housing and Trims: 1 year</li> <li>• GU10 lamps, 50,000 hours (5 years)</li> </ul>



# MINILUX

## 3-1/2" Series

### CODIFICATION EXAMPLE



### ORDERING CODE for Complete Unit

SERIES	HOUSING TYPE	LAMP TYPE	TRIM TYPE	TRIM FINISH	LAMP VERSION	HOUSING VERSION
<b>MI</b>	<b>N</b>	<b>10</b>			<b>-7</b>	<b>2</b>
<b>MI</b>	<b>N</b> New Construction	<b>10</b> GU10	<b>-G</b> Adjustable	<b>01</b> White <b>11</b> Matte White <b>13</b> Satin Nickel <b>22</b> Matte Black	<b>-7</b> Generation 7	<b>2</b> Generation 2
			<b>-R</b> Downlight with Anodized Reflector	<b>01AN</b> White <b>11AN</b> Matte White <b>13AN</b> Satin Nickel	<b>-7</b> Generation 7	<b>2</b> Generation 2
			<b>-S</b> Shower	<b>01</b> White <b>11</b> Matte White <b>13</b> Satin Nickel	<b>-7</b> Generation 7	<b>2</b> Generation 2
			<b>-Q</b> Square Adjustable	<b>01</b> White <b>11</b> Matte White <b>13</b> Satin Nickel	<b>-7</b> Generation 7	<b>2</b> Generation 2

**Note:** For Contractor Pack (6 Complete Units), add **CPK** at the beginning of the ordering code.

**Ex.:** **CPKMIN10-G11-72**



**CONTRAST**  
LIGHTING

2016-04

1009, rue du Parc Industriel  
Lévis (Québec) G6Z 1C5 Canada  
Tel.: 1-888-839-4624 Fax: 1-877-839-7057  
info@contrastlighting.com  
www.contrastlighting.com

© 2016 Contrast Lighting M.L. Inc.  
All rights reserved

Contrast Lighting reserves the right to make changes in specifications and/or to discontinue any product at any time without notice or obligation and will not be liable for any consequences resulting from the use of this publication.